



Principal's Address Upper Sec PTM

17 Feb 2023

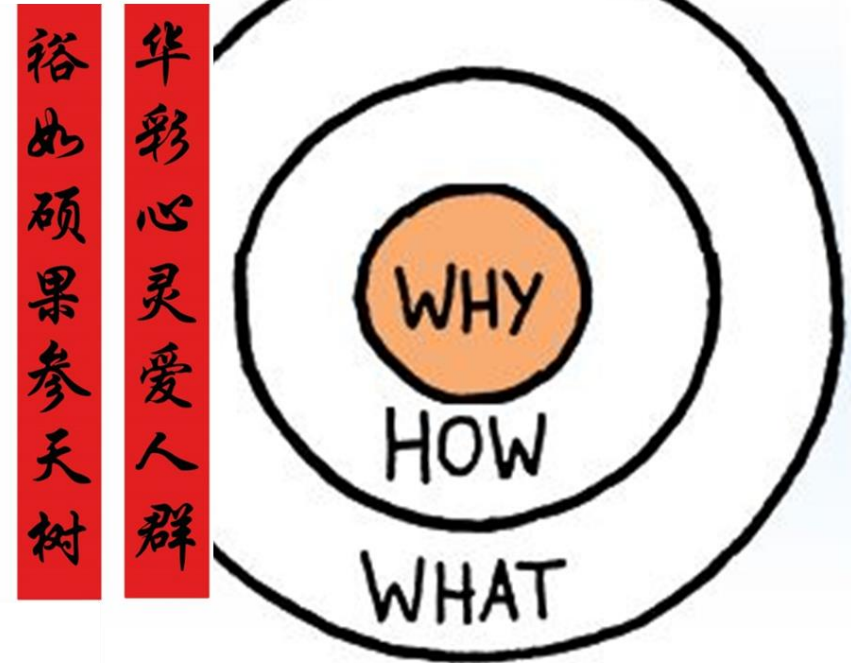
A Community where Learners Flourish

We Have Rallied *Together* To Grow & Flourish in the Last Few Years. There's much *good* we can celebrate.

2020 : To Build Clarity of Vision – A Community Where Learners Flourish

2021 : To Be Bold on Our Mission – To Nurture Yuhuans of Character & Purpose Who Care, Connect and Contribute

2022 : Dare to CARE³ – Dare to be Curious, Adaptable, Respectful, Responsible, Resilient and Above All, CARE³.



2023: Team Yuhua – From Good To Great

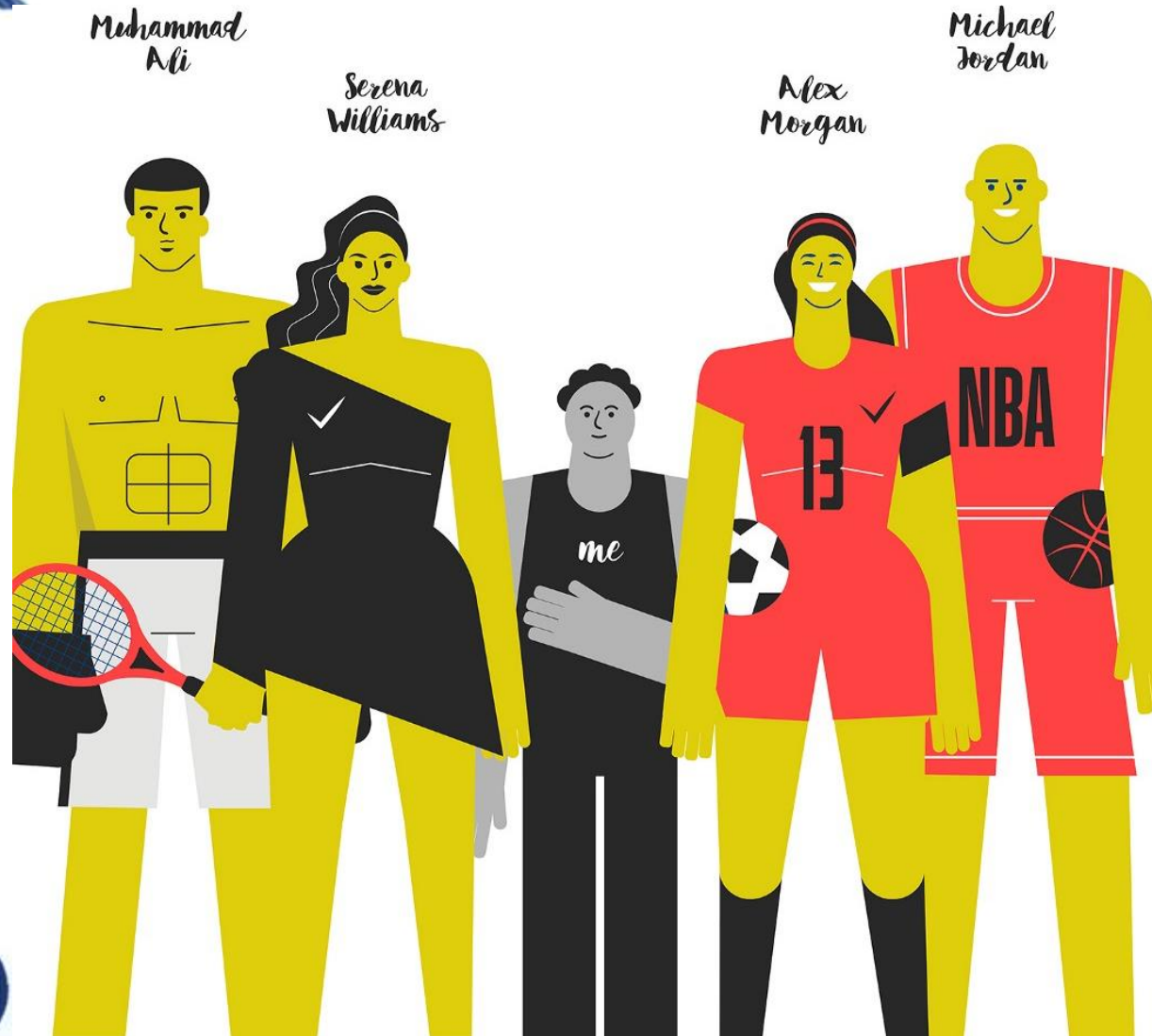
1) **One Heart:**
Braving
Challenges &
Strengths

2) **One Mind:**
Adopting a
Positive
Growth
Mindset

3) **One Team:**
Embracing A
Larger
Community



The 3 Aspects – Displayed In All Great Sportsmen



1) **One Heart:**
Braving
Challenges &
Strengths

2) **One Mind:**
Adopting a
Positive
Growth
Mindset

3) **One Team:**
Embracing A
Larger
Community



Team Yuhua – We All Have a Role to Play As We Care, Connect and Contribute From Good to Great

Sec 1 / 2 / 3 / 4
Curiosity

Sec 1 / 2 / 3 / 4
Adaptability

Sec 1 / 2 / 3 / 4
Respect

Sec 1 / 2 / 3 / 4
Responsibility

Sec 1 / 2 / 3 / 4
Resilience

Sec 1 / 2 / 3 / 4
Care

Sec 1 / 2 / 3 / 4
Connect

Sec 1 / 2 / 3 / 4
Contribute

Sec 5
Flourish

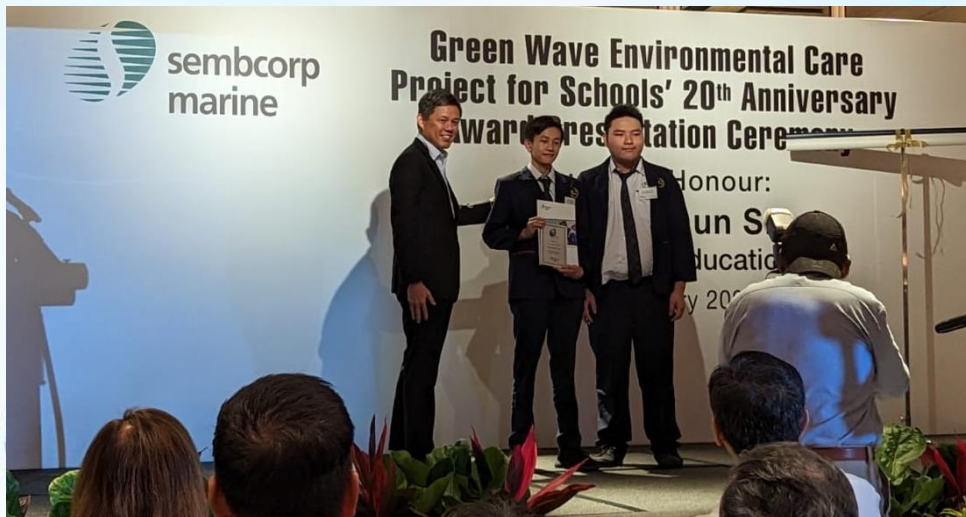


Form / Subject Classes

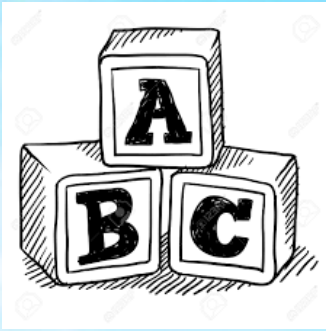
NSG 2023

SYF 2023

NDP 2023 @ Padang



Many other areas in which Yuhuans excel



Yuhuans: A-B-Cs To Doing Well:

- 1) **A**dopt Above All, C-A-RE³ In All That You Do.
- 2) **B**e Clear On Your Goals And Targets.
- 3) **C**hannel Collective Efforts To Making Right Decisions



1) Adopt Above All, C-A-RE³ in All That You Do.

Your Moral and Performance Character Matters.



We aspire for every Yuhuan to learn for life. If we care for *self, others and the community*, we will:

- Be *curious* to always learn, connecting with the community to grow and improve.
- *Respect* and be *responsible* in all dealings with others, as we first exercise self-respect and responsibility in all daily pursuits.
- Grow *adaptability* (outer agility towards change) and *resilience* (inner steel to face challenges) in order to make a difference – we never give up.

Because as Yuhuans,
Above All, We *Care³*.



Yuhuans Who Dare to CARE³

Moral Character

Self Directed in Making Right Choices

- **Dare to CARE³** for good attendance and punctuality
- **Dare to CARE³** in mobile phones & gadgets use (kept in lockers, iPads to be fully charged)
- **Dare to CARE³** in grooming at school, outside & during HBL (polo shirt)
- **Dare to CARE³** to look after school environment and one another

Care, Connect, Contribute As A Community

- **Dare to CARE³** in relationships with teachers & peers to build *positive school tone*



Performance Character

Self Directed in Learning

- **Dare to CARE³** to pursue excellence in class, CCA and HBL
- **Dare to CARE³** to complete work / tasks in pursuit of excellence
- **Dare to CARE³** to address learning gaps in pursuit of excellence

Care, Connect, Contribute As A Community

- **Dare to CARE³** in relationships with teachers & peers to build *positive school learning culture*

2) Be Clear On Your Desired Goals For the Future

Your Purpose Matters.



What Are Some Dreams You Really Care About?
What Do You Want To Do After You Graduate From Yuhua?

Upper Secondary: A 2 Year / 3 Year (Sec 5) Curriculum Towards National Examinations And Desired Goals

Questions to consider:

- What do you ultimately want to do? Consider passion, strengths and aspirations.
- Hence, what course do you want to do post-secondary?
- JC/ Poly / ITE ? What is the cut-off point? What criteria for the course? Any subject requirements?

Strategize:

Set targets for each subject, create a study plan, identify areas to focus on, get rid of distractions, be proactive.

IT IS YOUR FUTURE!



Working With The End Goal In Mind



Target Setting 2022
 Class: 302 Date received: 28 Jan 2022

Subjects		Target Grades
1	English Language	4
2	Mother Tongue Language	4
3	Mathematics	1
4	Science	2
5	Humanities	4
6	NFS	3
ELMAB3		14

Revised Target Grades	WA1	WA2	WA3	EYE

Name of institution	Course	Cut off point
Shatec		
NYP		
NP		
	C35	
	N48	
	Culinary Arts	
	Business & Financial Technology	
	Real Estate Business	
		10-15
		9-15



3) Channel Collective Efforts To Making Right Decisions

Care, Connect, Contribute Matters

How are our sleeping hours?

Are we coming to school on time?

How are we using our gadgets and devices?

How much games should we indulge in?

What sort of self-study can we do?

How should we plan my time?

How can I help my classmates do better?



Simple Formula

How to get the best performance

$$P = p - i$$

Performance = Potential – Interference

How well you actually do.

Your ability to do well. This is not finite. The harder you work, the greater your potential grows.

Examples:

- Gaming
- Excessive device, computer or phone use
- Hanging out with wrong company
- Unfocused friends

Your performance is equal to what you are capable of when you remove distractions

What are your distractions?

How can you minimise these?



Care, Connect & Contribute As One Class

- **Collective Efforts As One Class Matters**
- Track records show that classes with a strong collective spirit and culture do well together
- Cherish the time at Flourish Week 2023 (elaborated by Year Heads later) to build a strong class spirit!
- Look out for one another, and encourage each other towards positive change.
- How can everyone work together on the A-B-Cs?
 - **Adopt Above All, CARE³ In All That You Do.**
 - **Be Clear On Your Desired Goals**
 - **Channel Our Collective Efforts To Making Right Decisions**





Assessment Weightage & Timeline

Level	WA1	WA2	WA3	EYE	Total
Sec 3	15 %	15 %	15 %	55 %	100 %
Sec 4/5	15 %	15 %		70 % (Prelim)	100 %

Semester 1	
Term I	Weighted Assessment (All Levels): Mon 13 Feb to Wed 1 Mar
Term II	Weighted Assessment (All Levels): Tue 25 Apr to Thu 11 May
Semester 2	
Term III	Weighted Assessment (All Levels): Mon 31 Jul to Thu 17 Aug N Level Prelim: Mon 7 Aug to Fri 18 Aug O Level Prelim: Mon 21 Aug to Wed 30 Aug
Term IV	End of Year Exams (Sec 1 to 3): Tue 26 Sep to Thu 5 Oct



Care, Connect & Contribute As One Family

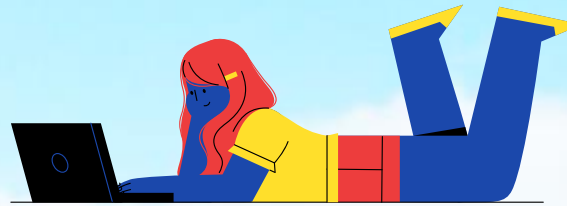
- How Can Parents Support in This Journey?

1) Have open communication with:

- a) Your child
- b) The school

2) Be aware of:

- a) Time-table, schedules, school activities
- b) Their use of gadgets and devices
- c) Their goals, dreams and aspirations



You are the most important people in your child's life – Let's Work Together To Influence them

Beyond A-B-Cs, encourage your child on the **3As**:

- **Attendance** - be present & punctual for school
(Reporting time: Mon-Fri 7:30am, Wed 8:30 am
→ Do aim to reach 10 mins before.)
- **Attention** – monitor that he/she eats well, sleeps early, not be distracted by devices / games – so that he/she can focus on learning in class
- **Attitude** – develop self-discipline and consistency (do homework, revise regularly, create study plan, submit assignments on time, minimising distractions e.g. devices and phone)



Transformation of Yuhua 2023



One Heart, One Mind, One Team

Canteen (YH Café)

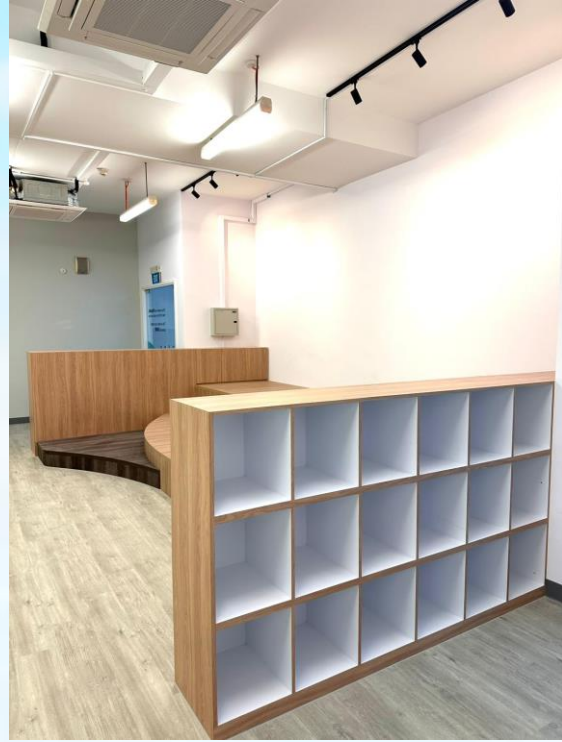
- A space co-created by students
- Use every opportunity catch up, socialize and build relationships
- Cherish the new provisions with Above All, CARE3.



Transformation of Yuhua 2023



**One Heart, One Mind,
One Team**



YeaHUB

- A space co-created by students themselves
- A safe & inviting space to hang out during and after school
- Adult youth workers in support (trained social workers, counselling trained staff)



Transformation of Yuhua in Dec 2022



One Heart, One Mind, One Team

Learning Areas

- Humanities Room, MTL Rooms, SEN Room
- Vibrant learning spaces
- Let's pursue learning with one heart, one mind, as one Team!



But the key transformation is to be seen in Yuhuans.



1) **One Heart:**
Braving
Challenges &
Strengths

2) **One Mind:**
Adopting a
Positive
Growth
Mindset

3) **One Team:**
Embracing A
Larger
Community



Join the Yuhua Parent Support Group (PSG)!



The Yuhua Secondary School Parent Support Group has been supporting the school in maintaining a safe and nurturing environment where Yuhuans can flourish.

Join the PSG family to:

- Get the latest on school activities and programmes.
- Get support from other parents
- Learn new parenting skills and knowledge
- Get close to your child(ren) through the tips gained from parenting sessions, plus the various school and PSG activities that you can participate in.



<https://form.gov.sg/61c8f7732efd780012552976>



A Community where Learners Flourish



2023: Team Yuhua –
From Good To Great

One Heart, One Mind, One Team

Thank You.

A Community where Learners Flourish